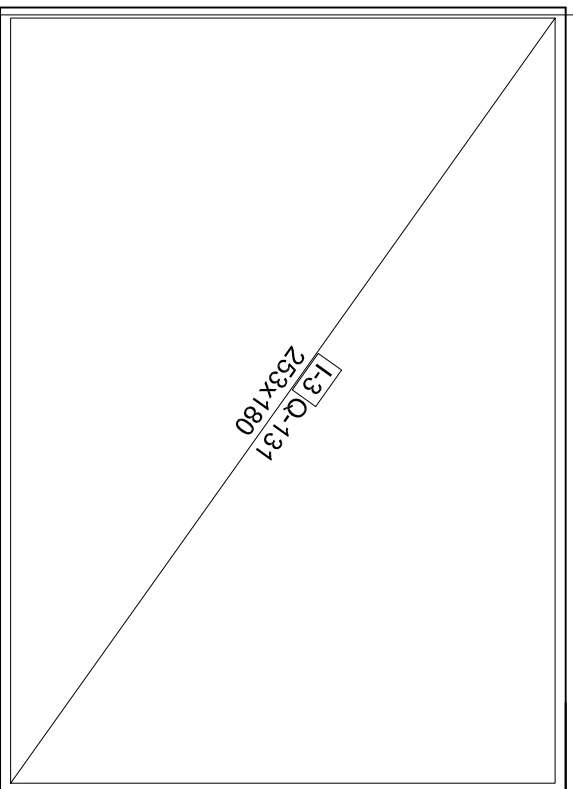
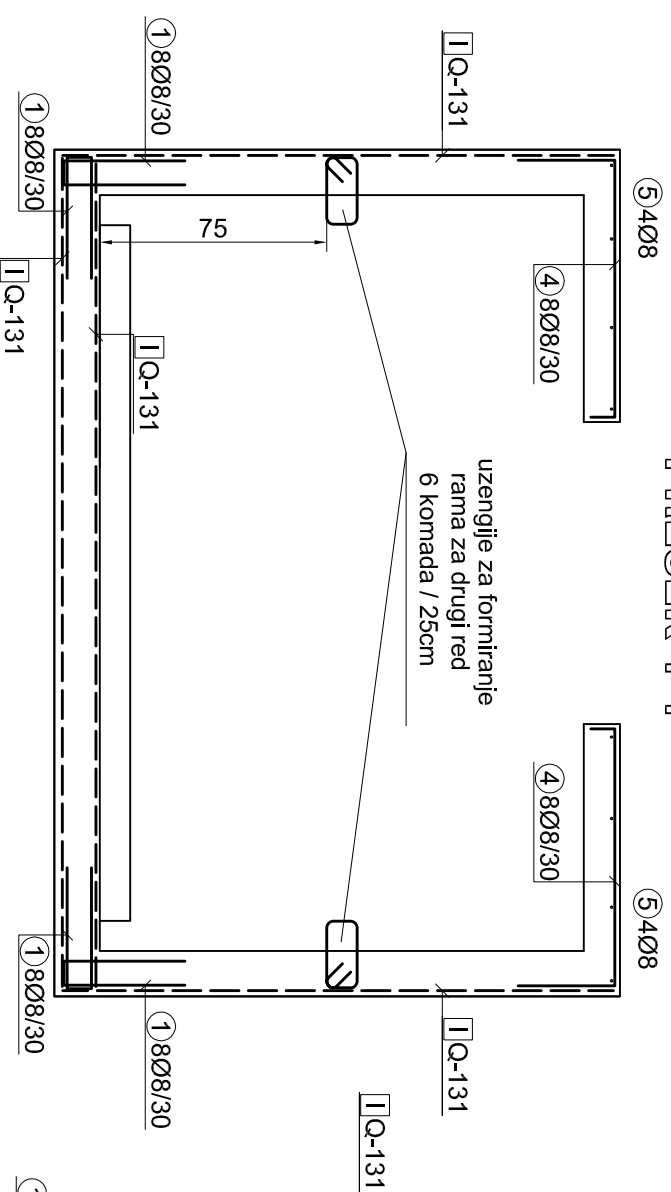


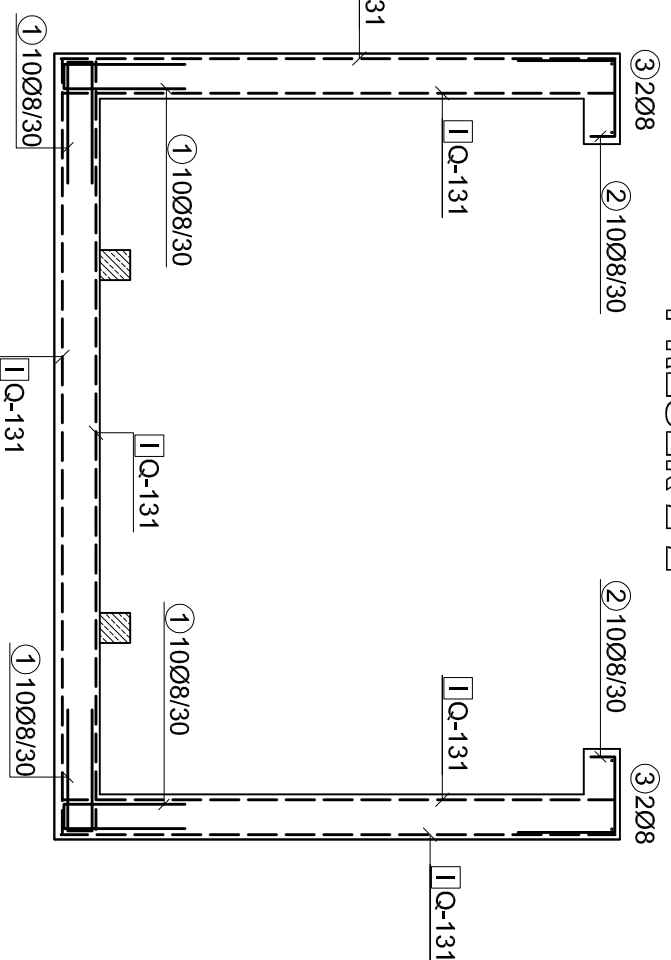
PODUŽNI ZIDOV I



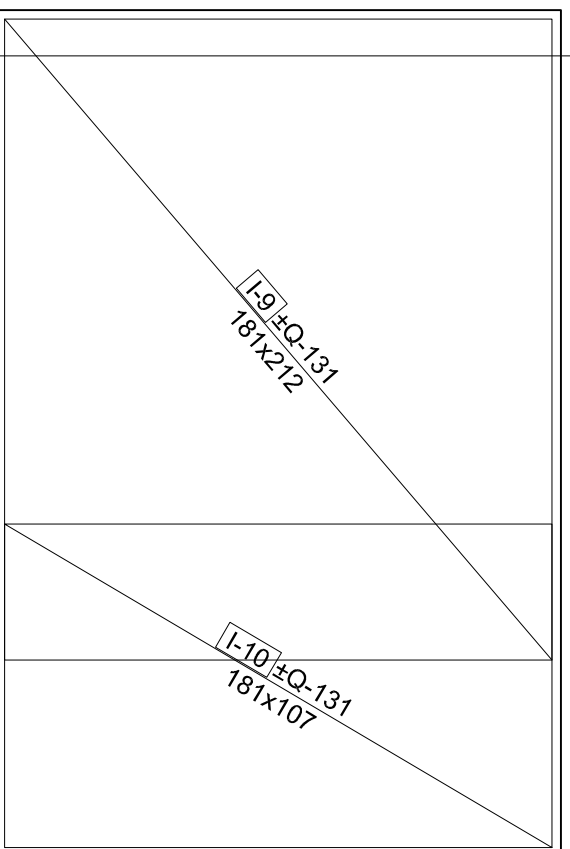
PRESEK 1-1



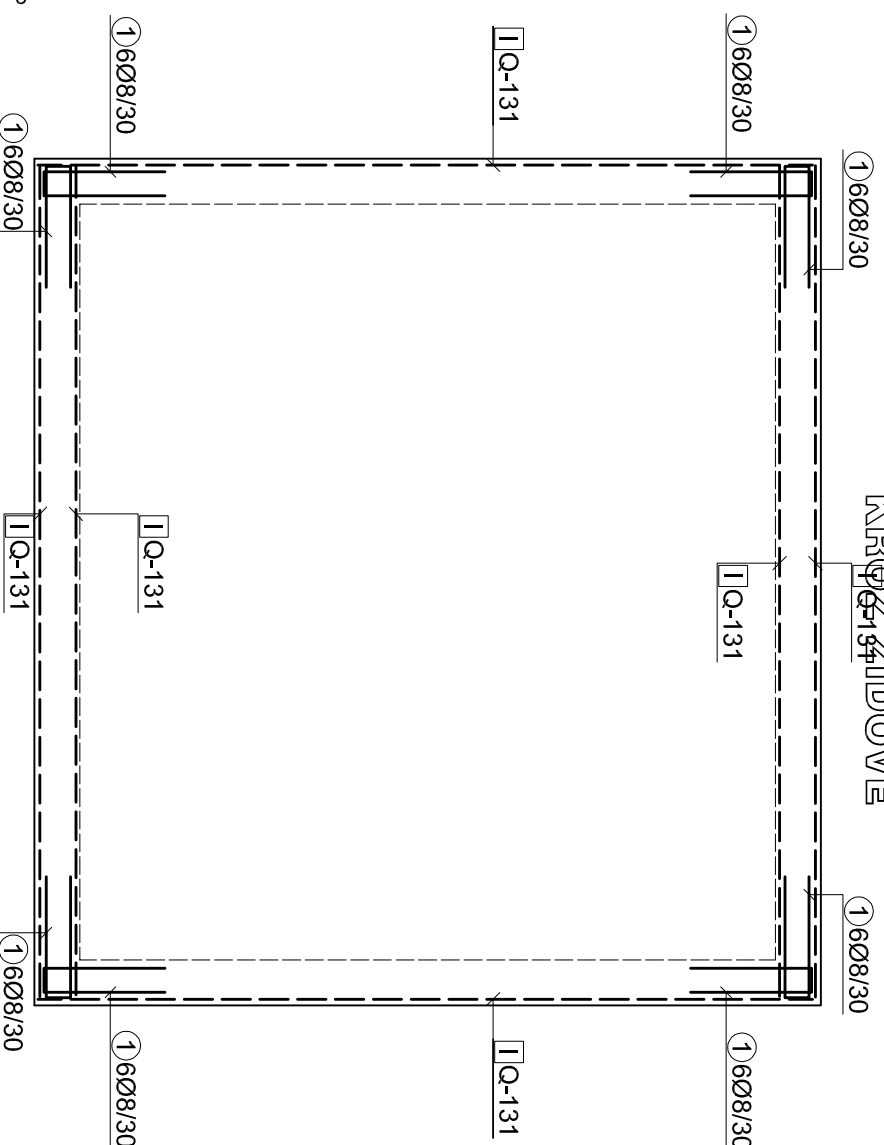
PRESEK 2-2



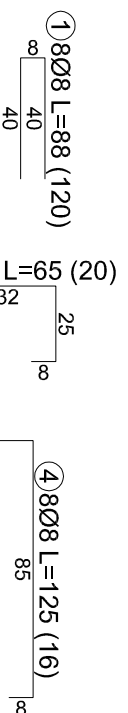
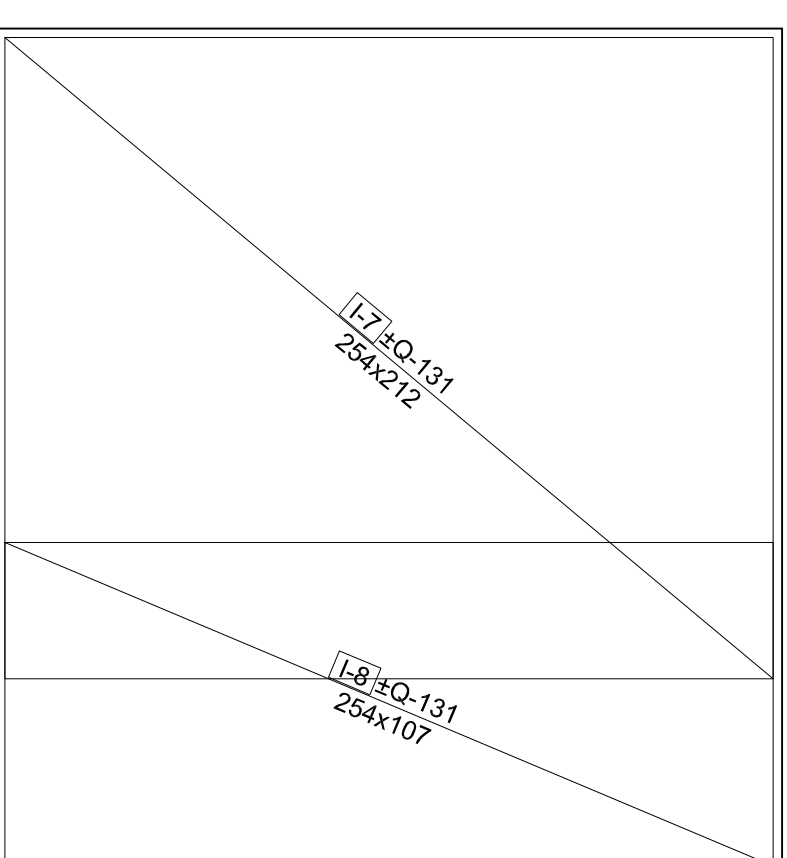
POPREČNI ZIDOV I



HORIZONTALNI PRESEK
KROZ ZIDOVE



TEMELJNA PLOČA

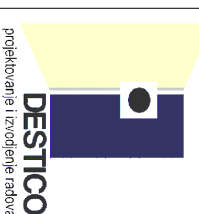


3 2Ø8 L=270 (4)

5 4Ø8 L=250 (6)

NAPOMENE:

- upotrebljena armatura MA500/600 i GA240/360
- preklap armaturnih mreža ostvariti sa minimalno 3 okca odnosno 45cm
- armaturnu mrežu obavezno osvojiti od oplata zidova i od poda distancerima za 1,5cm
- kako bi mreža bila postavljena u projektovani položaj



ODGOVORNI PROJEKTANT:
Igor Jević, dipl.građ.inž.
br.licence: 310 K198 11

SARADNICI:

BR.PROJEKTA:	BR.CRTEŽA:	DATUM:	RAZMERA:	BR. LISTA:
14-026	203	05 / 2014	1:25	07

NAZIV CRTEŽA:
GROBNICA TIP "GS"
PLAN ARMIRANJA

NAZIV PROJEKTA:
Projekat konstrukcije za izradu grobnica

NAZIV OBJEKTA I LOKACIJA:
Tipске grobnice na Novom groblju
u Sremskoj Mitrovici

INVESTITOR:
JKP Komunalije, Sremska Mitrovica