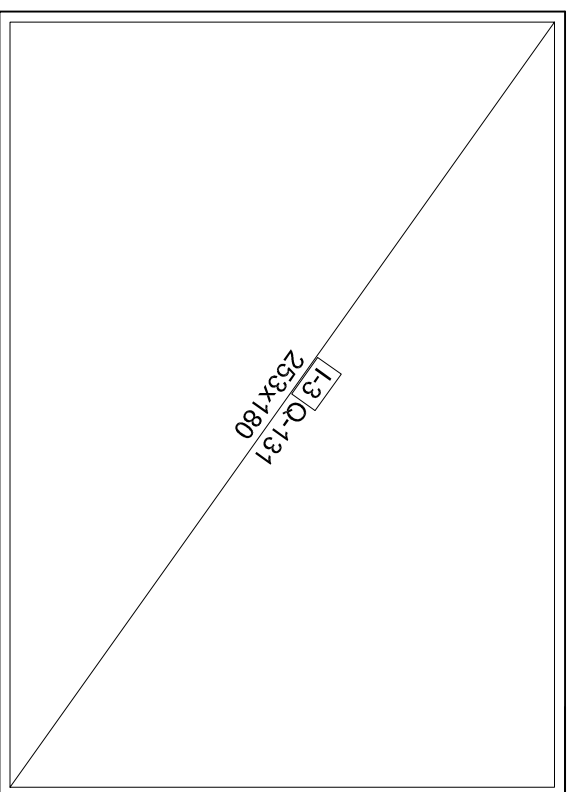
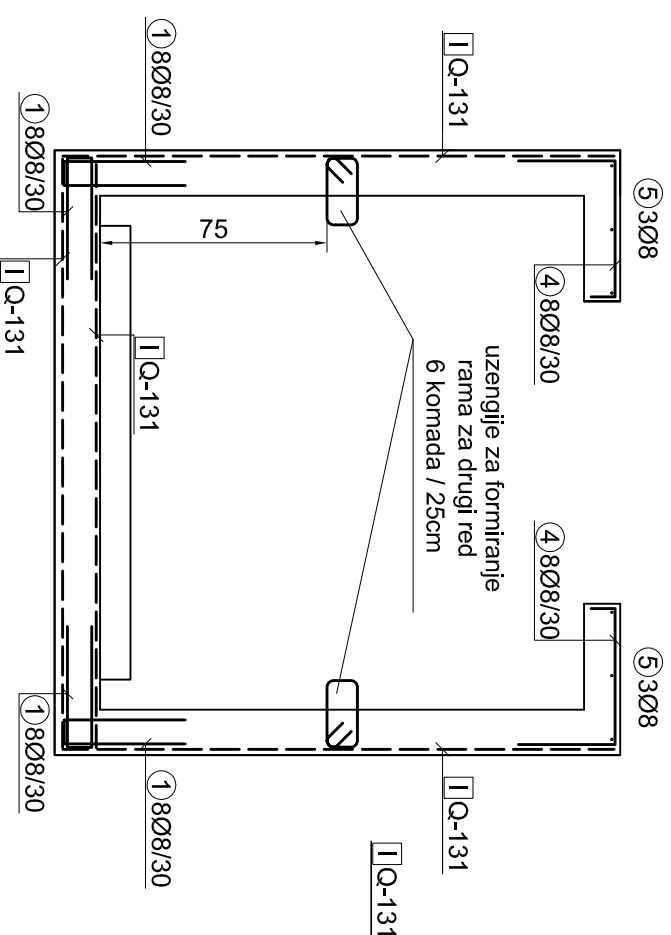


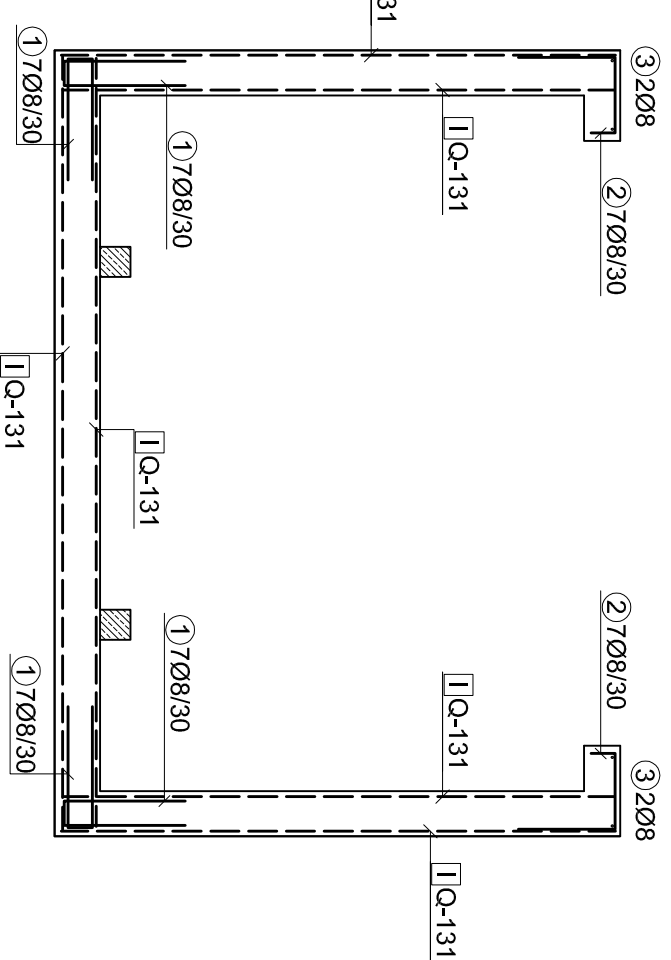
PODUŽNI ZIDOV I



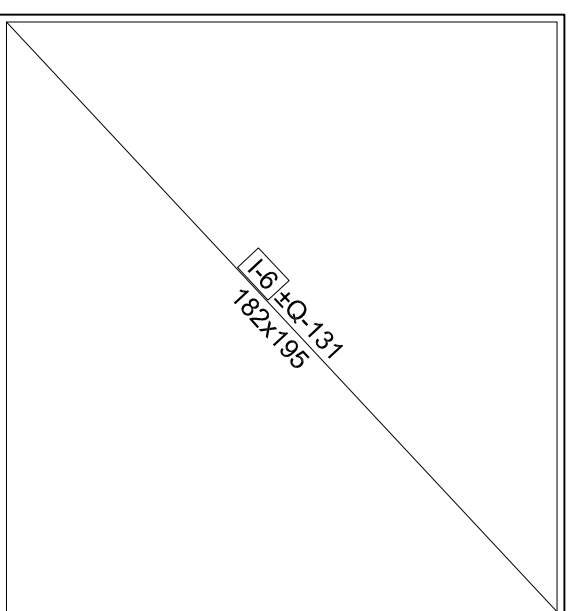
PRESEK 1-1



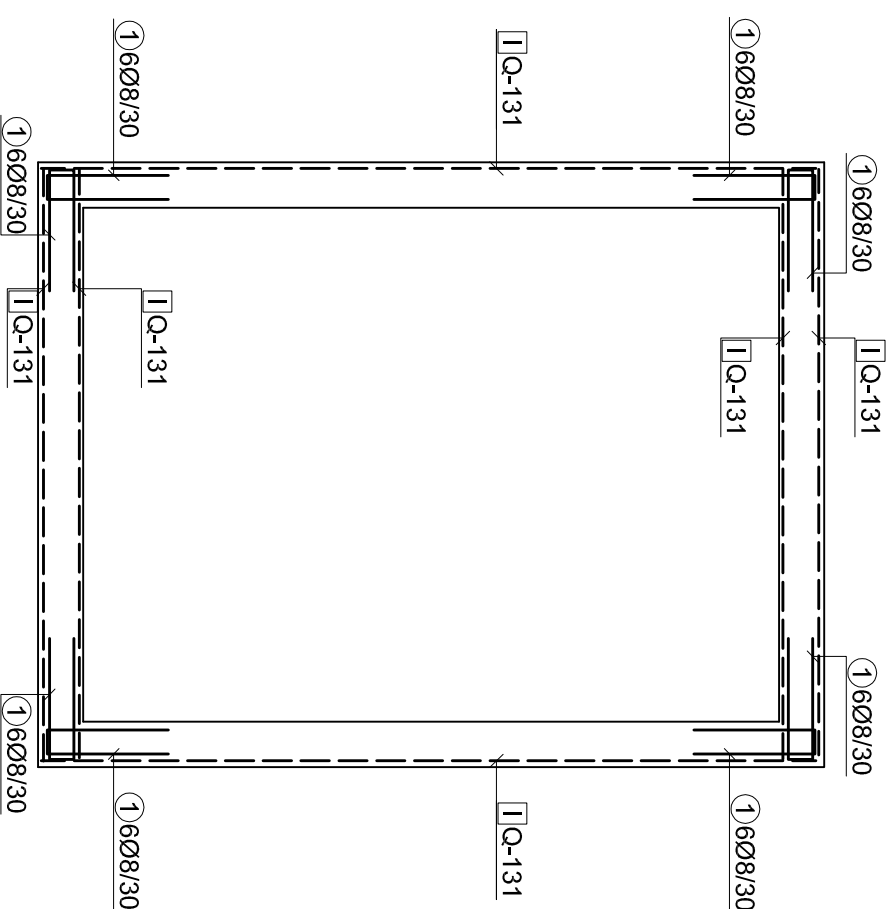
PRESEK 2-2



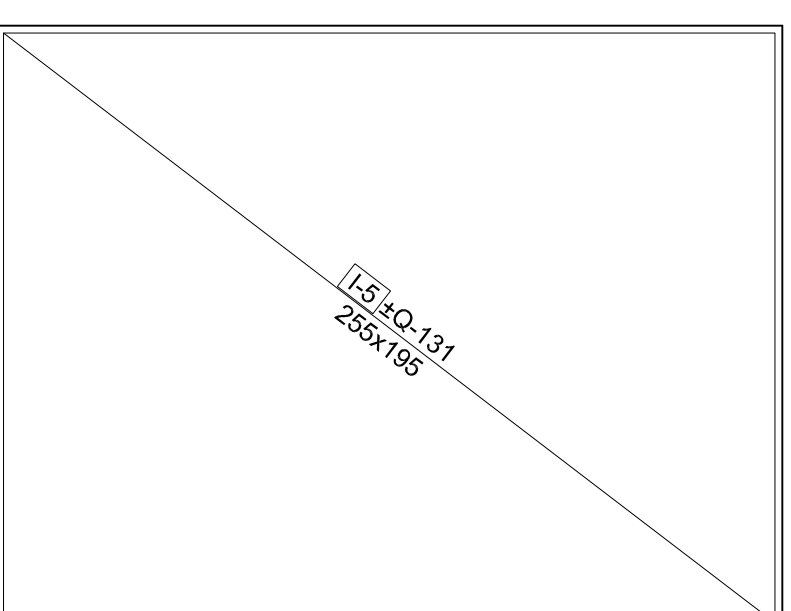
POPREČNI ZIDOV I



HORIZONTALNI PRESEK KROZ ZIDOVE



TEMELJNA PLOČA



① 6Ø8 L=88 (108)

40
40
∞

② 7Ø8 L=65 (14)

25
32
8

③ 2Ø8 L=190 (4)

190

④ 8Ø8 L=85 (16)

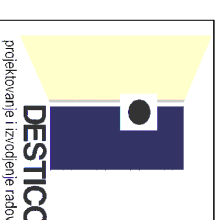
45
∞

⑤ 3Ø8 L=250 (6)

250

NAPOMENE:

- upotrebljena armatura MA500/600 i GA240/360
- preklop armaturnih mreža ostvariti sa minimalno 3 okca odnosno 45cm
- armaturnu mrežu obavezno osdvojiti od oplata zidova i od poda distancerima za 1,5cm
- kako bi mreža bila postavljena u projektovani položaj



ODGOVORNI PROJEKTANT:

Igor Jević, dipl.građ.inž.
br.licence: 310 K198 11

SARADNICI:

GROBNICA TIP "G4"
PLAN ARMIRANJA

BR.PROJEKTA:	BR.CRTEŽA:	DATUM:	RAZMERA:	BR. LISTA:
14-026	202	05 / 2014	1:25	06

NAZIV PROJEKTA:

Projekat konstrukcije za izradu grobnica

NAZIV OBJEKTA I LOKACIJA:

Tipске grobnice na Novom groblju
u Sremskoj Mitrovici

INVESTITOR:

JKP Komunalije, Sremska Mitrovica