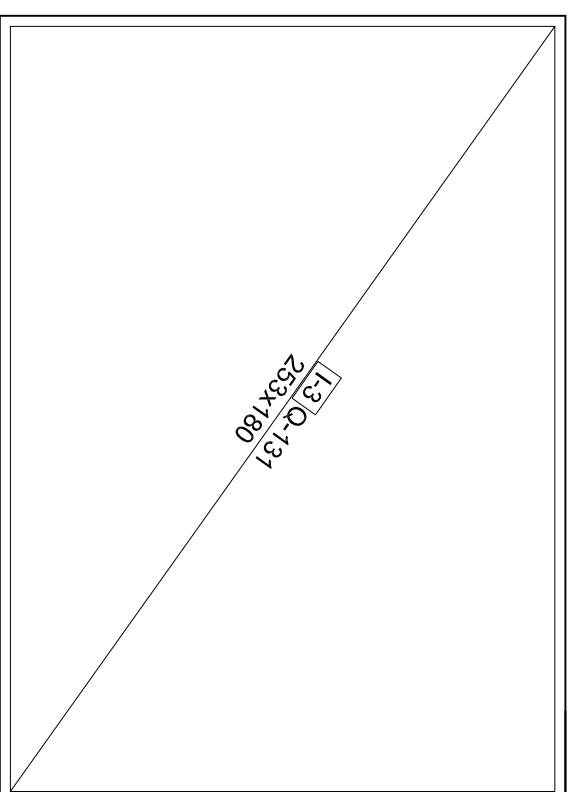
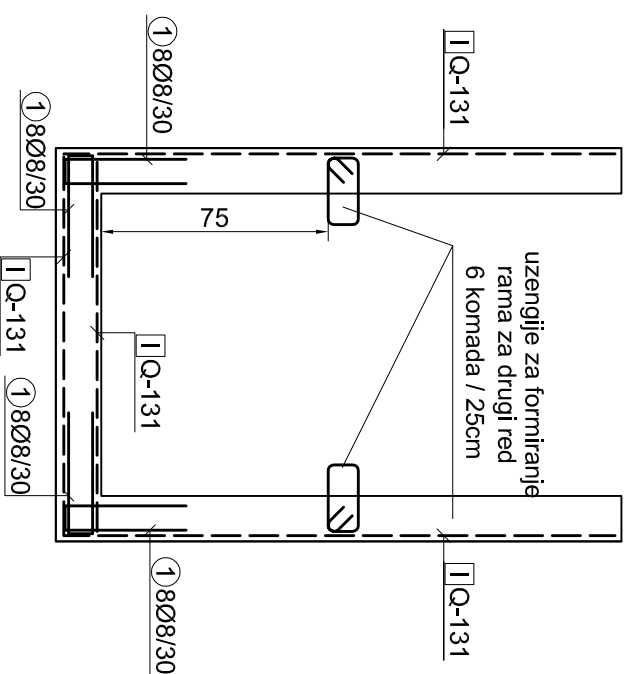


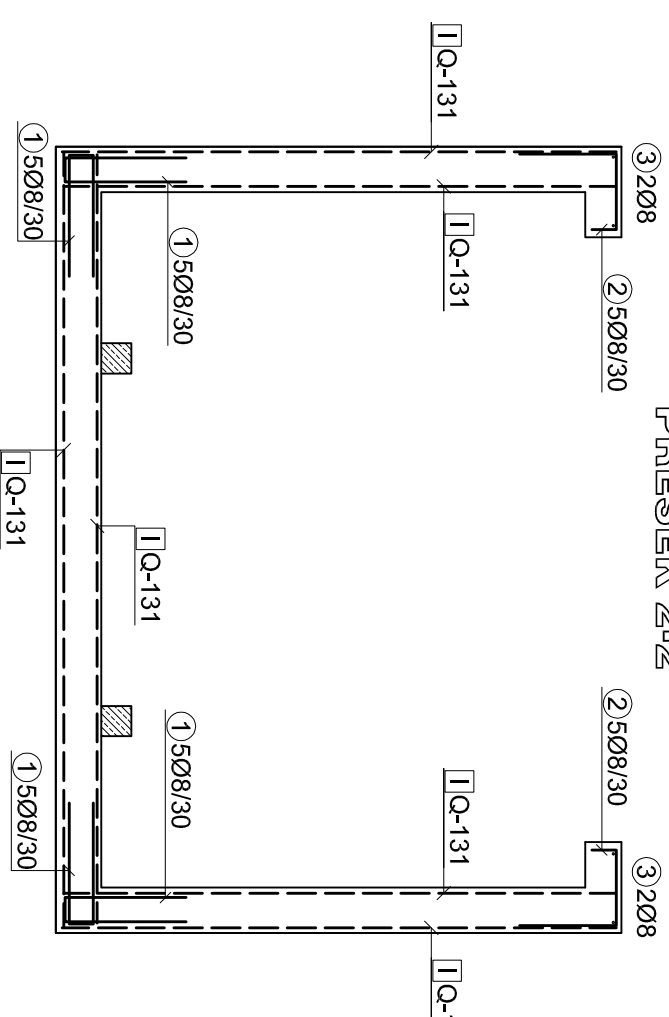
PODUŽNI ZIDOWI



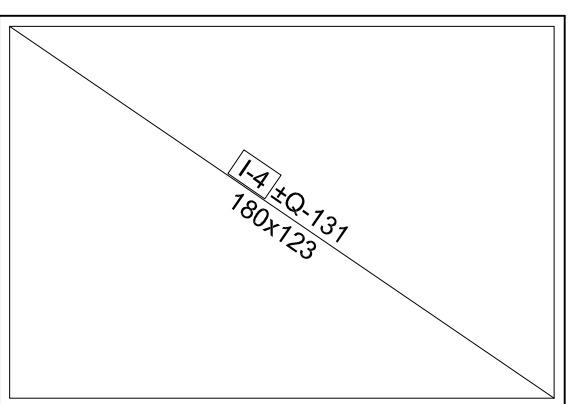
PRESEK 1-1



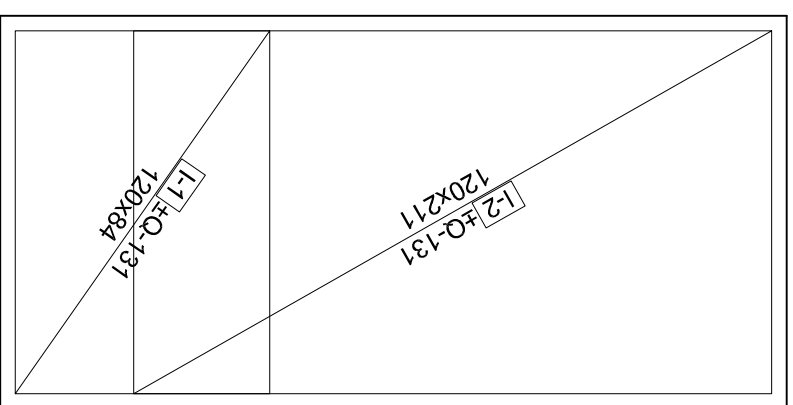
PRESEK 2-2



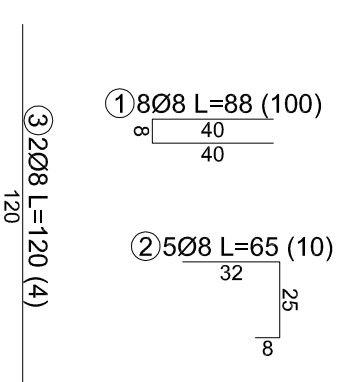
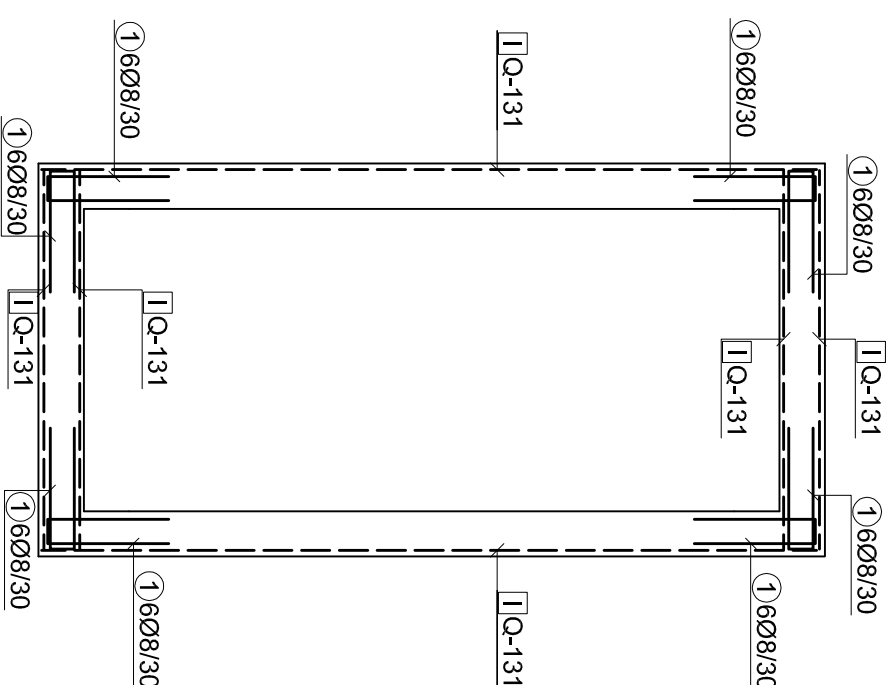
POPREČNI ZIDOWI



TEMELJNA PLOČA



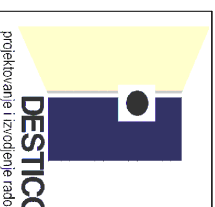
HORIZONTALNI PRESEK KROZ ZIDOVE



3 2Ø8 L=120 (4)
120

NAPOMENE:

- upotrebljena armatura MA500/600 i GA240/360
- preklap armaturnih mreža ostvariti sa minimalno 3 okca odnosno 45cm
- armaturnu mrežu obavezno osdvojiti od oplata zidova i od poda distancerima za 1,5cm
- kako bi mreža bila postavljena u projektovani položaj



GROBNICA TIP "G2"
PLAN ARMIRANJA

ODGOVORNI PROJEKTANT:
Igor Jević, dipl.građ.inž.
br.licence: 310 K198 11

NAZIV PROJEKTA:
Projekat konstrukcije za izradu grobnica

SARADNICI:

NAZIV OBJEKTA I LOKACIJA:
Tipске grobnice na Novom groblju
u Sremskoj Mitrovici

BR.PROJEKTA: 14-026
BR.CRTEŽA: 201
DATUM: 05 / 2014
RAZMERA: 1:25
BR. LISTA: 05

INVESTITOR:
JKP Komunalije, Sremska Mitrovica